



ASKING PRICE

£215,000

Keswick Drive

Wakefield, WF2 9HA



HODSONS

PROPERTY SUMMARY

This semi detached home is well presented throughout and is located in an attractive corner plot. A viewing is recommended and will reveal living accommodation comprising, entrance hall, fitted kitchen with range of quality units, lounge with French doors to a conservatory. To the first floor are three bedrooms and a bathroom with modern suite. A paddle style staircase leads to the useful loft room. Outside are well maintained gardens to the front side and rear along with off road parking. Conveniently located close to a wide range of amenities, everything you need is just a stone's throw away. Whether it's shopping, dining, or leisure activities, you'll find it all within easy reach. Don't miss this fantastic opportunity to own a beautiful home in a desirable location. Book a viewing today and make Keswick Drive your new address!

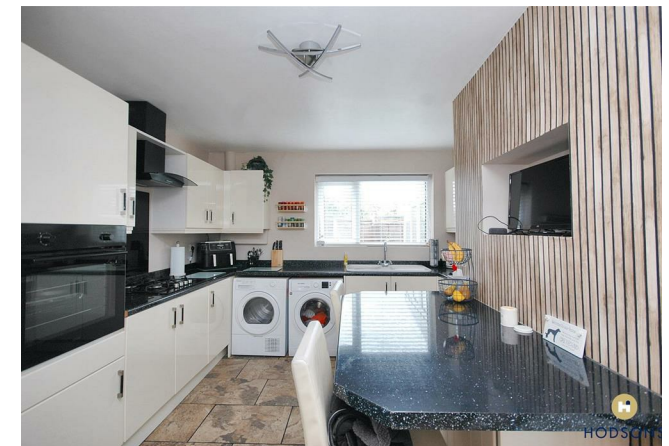
3



1

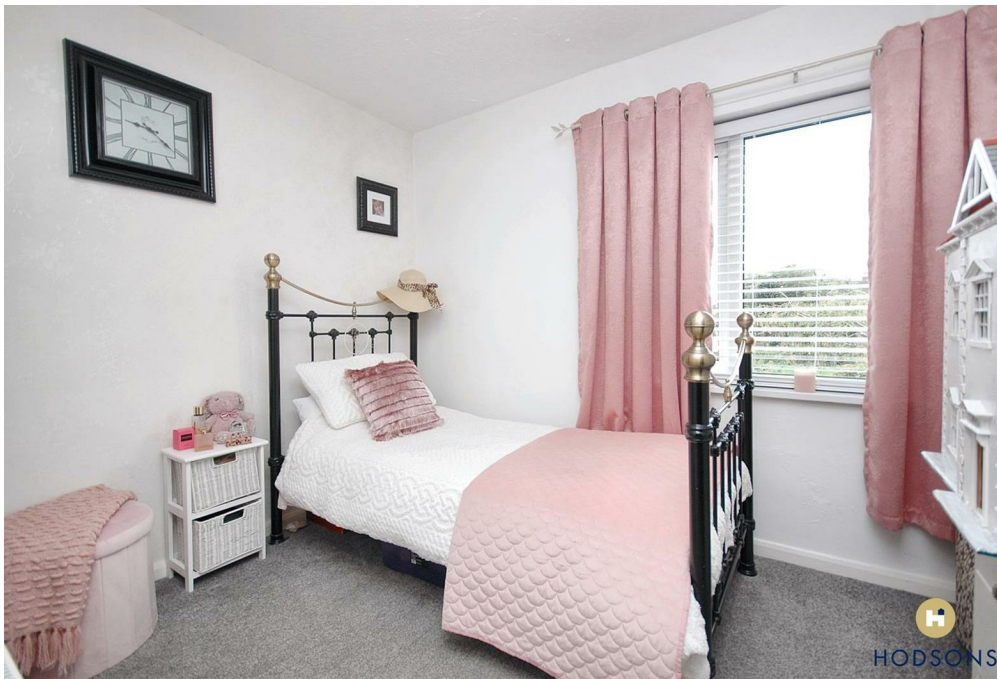


2





HODSONS





LOCAL AUTHORITY

Wakefield

TENURE

Freehold

COUNCIL TAX BAND

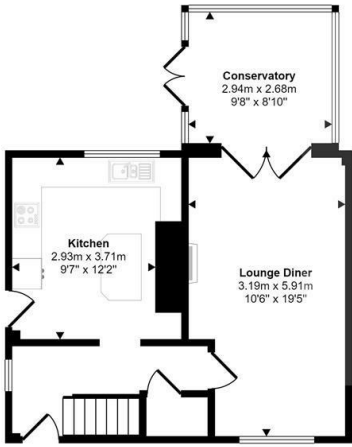
A

VIEWINGS

By prior appointment only

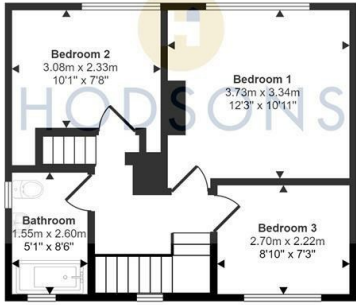


Approx Gross Internal Area
112 sq m / 1209 sq ft

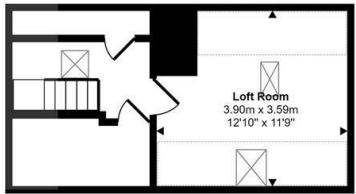


Ground Floor
Approx 48 sq m / 515 sq ft

Denotes head height below 1.5m



First Floor
Approx 40 sq m / 430 sq ft



Second Floor
Approx 25 sq m / 265 sq ft

This floorplan is only for illustrative purposes and is not to scale. Measurements of rooms, doors, windows, and any items are approximate and no responsibility is taken for any error, omission or mis-statement. Icons of items such as bathroom suites are representations only and may not look like the real items. Made with Made Snappy 360.

Energy Efficiency Rating		Current	Potential
Very energy efficient - lower running costs			
(92 plus) A			
(81-91) B			75
(69-80) C			
(55-68) D		50	
(39-54) E			
(21-38) F			
(1-20) G			
Not energy efficient - higher running costs			
England & Wales		EU Directive 2002/91/EC	

Agents Note: Whilst every care has been taken to prepare these particulars, they are for guidance purposes only. All measurements are approximate and are for general guidance purposes only and whilst every care has been taken to ensure their accuracy, they should not be relied upon and potential buyers/tenants are advised to recheck the measurements



<p>OFFICE ADDRESS 37-39 George Street Wakefield West Yorkshire WF1 1LX</p>	<p>OFFICE DETAILS 01924 200544 wakefield@hodsonsproperty.co.uk www.hodsonsproperty.co.uk</p>
---	---