



HODSONS

ASKING PRICE

£235,000

Sugar Lane

Dewsbury, WF12 7BY



HODSONS

PROPERTY SUMMARY

Located on Sugar Lane, Dewsbury, this semi-detached house offers a delightful living experience. Boasting two reception rooms, three bedrooms, and a bathroom, this property is perfect for those seeking a comfortable and spacious home.

A viewing is recommended and will reveal well presented accommodation which includes a modern fitted kitchen along with a separate utility room for added convenience. The lounge is a cosy retreat with views to the front, while the attractive orangery offers a peaceful spot to enjoy the well-presented south facing rear garden.

Venture upstairs to discover three inviting bedrooms while the bathroom is fitted with a modern white suite.

One of the highlights of this property is the particularly spacious garage, providing ample room to park a good-sized vehicle and still leaving space for storage or even a potential workshop for those with a creative flair.

Don't miss the opportunity to make this charming semi-detached house your new home. With its well-designed layout and convenient features.

3



1



2









HODSONS

Approx Gross Internal Area
129 sq m / 1392 sq ft



LOCAL AUTHORITY

Kirklees

TENURE

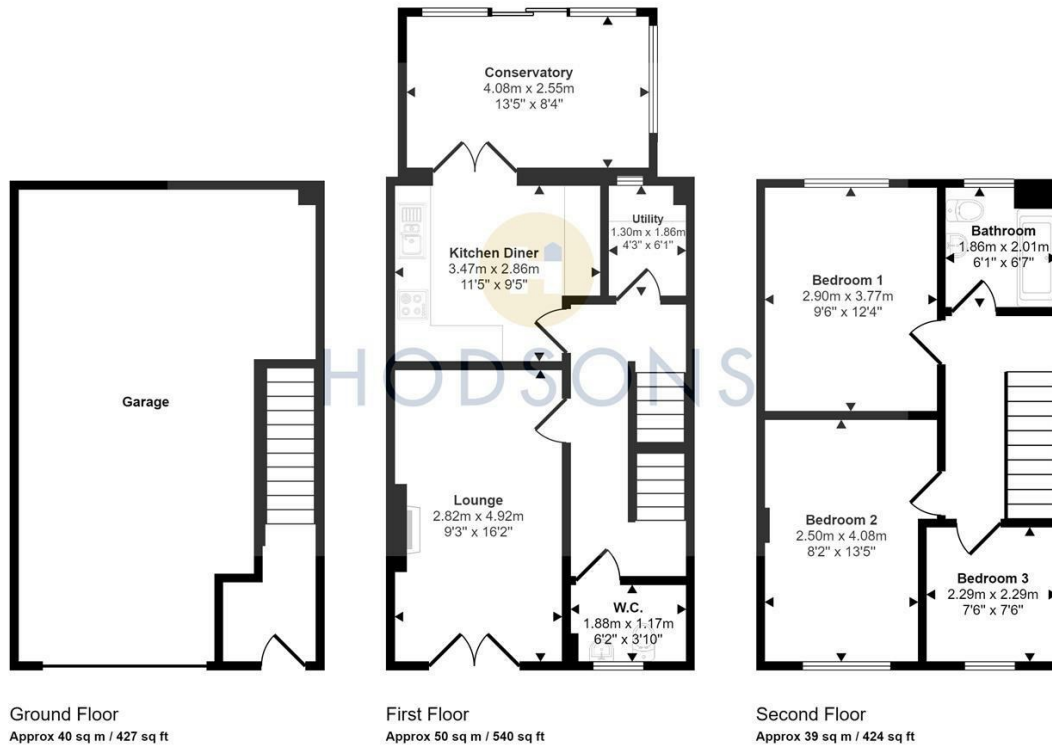
Freehold

COUNCIL TAX BAND

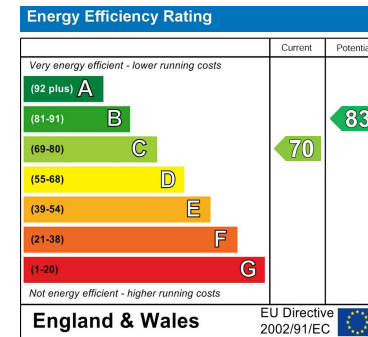
C

VIEWINGS

By prior appointment only



This floorplan is only for illustrative purposes and is not to scale. Measurements of rooms, doors, windows, and any items are approximate and no responsibility is taken for any error, omission or mis-statement. Icons of items such as bathroom suites are representations only and may not look like the real items. Made with Made Snappy 360.



Agents Note: Whilst every care has been taken to prepare these particulars, they are for guidance purposes only. All measurements are approximate and are for general guidance purposes only and whilst every care has been taken to ensure their accuracy, they should not be relied upon and potential buyers/tenants are advised to recheck the measurements



OFFICE ADDRESS

37-39 George Street
Wakefield
West Yorkshire
WF1 1LX

OFFICE DETAILS

01924 200544
wakefield@hodsonsproperty.co.uk
www.hodsonsproperty.co.uk