



HODSONS



ASKING PRICE

£230,000

Thornhill Drive

Wakefield, WF2 6NS



HODSONS

PROPERTY SUMMARY

Situated in a sought-after village location this semi-detached bungalow offers a prime corner plot position. The extended living space briefly comprises entrance lobby, lounge, dining room, fitted kitchen, two bedrooms and a shower room.

Outside, the bungalow is surrounded by gardens to the front, side, and rear, offering an excellent opportunity for gardening enthusiasts. With off road parking available to the rear leading to a detached garage.

This property is a rare find as it comes with no onward chain, making the buying process smooth and hassle-free. Don't miss out on the opportunity to make this lovely bungalow your new home in the heart of this popular village.

2



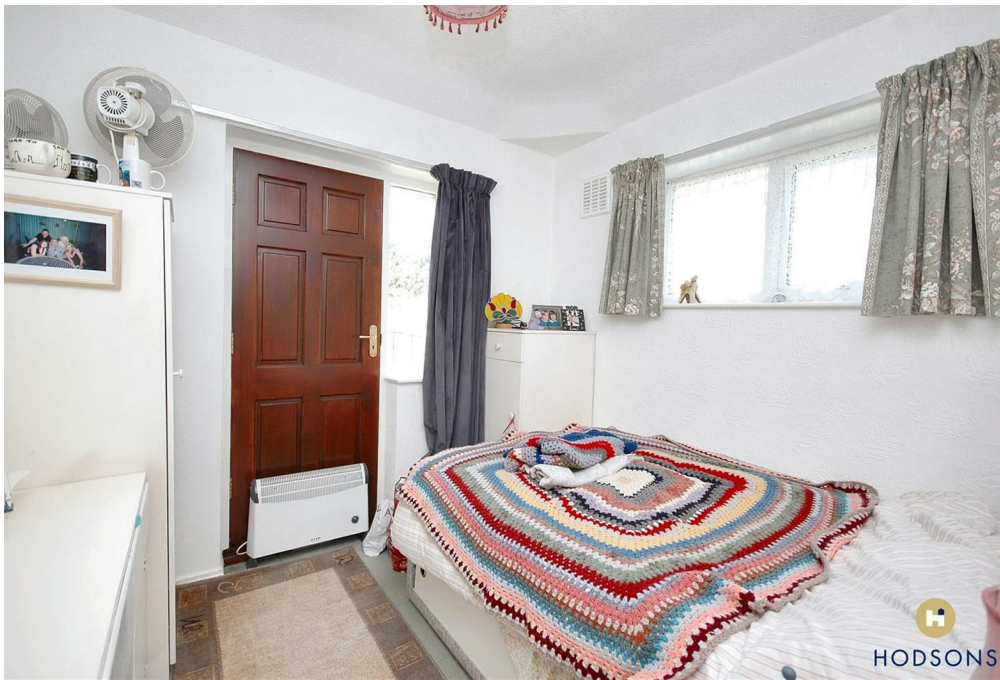
1



1



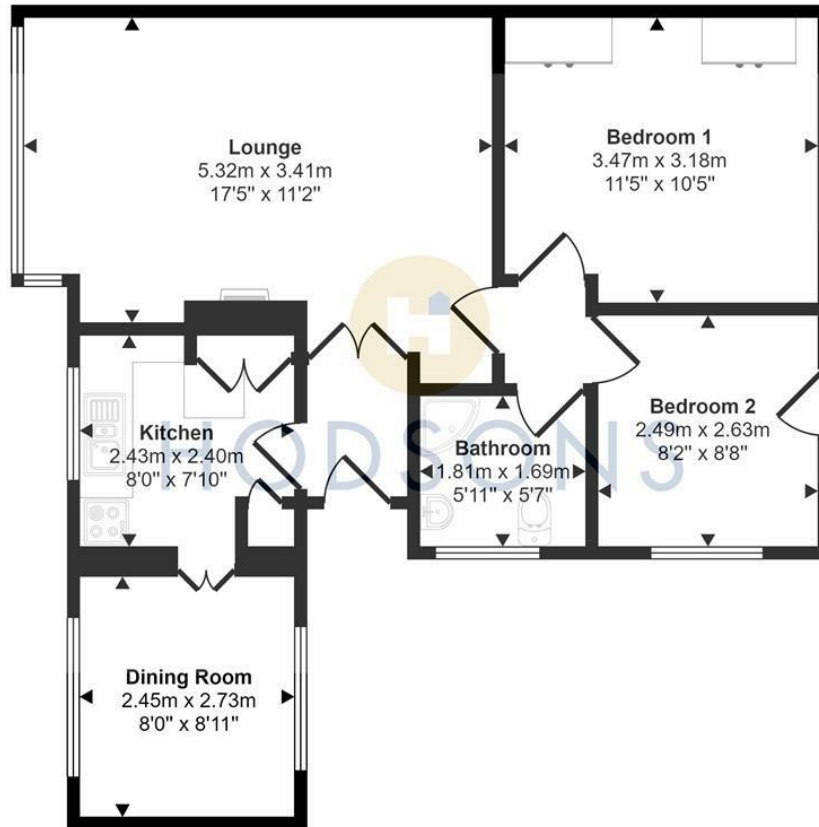






HODSONS

Approx Gross Internal Area
58 sq m / 626 sq ft



Floorplan

This floorplan is only for illustrative purposes and is not to scale. Measurements of rooms, doors, windows, and any items are approximate and no responsibility is taken for any error, omission or mis-statement. Icons of items such as bathroom suites are representations only and may not look like the real items. Made with Made Snappy 360.

LOCAL AUTHORITY

Wakefield

TENURE

Freehold

COUNCIL TAX BAND

B

VIEWINGS

By prior appointment only

Energy Efficiency Rating		Current	Potential
Very energy efficient - lower running costs			
(92 plus) A			
(81-91) B			
(69-80) C			71
(55-68) D			
(39-54) E		40	
(21-38) F			
(1-20) G			
Not energy efficient - higher running costs			
England & Wales		EU Directive 2002/91/EC	

Agents Note: Whilst every care has been taken to prepare these particulars, they are for guidance purposes only. All measurements are approximate and are for general guidance purposes only and whilst every care has been taken to ensure their accuracy, they should not be relied upon and potential buyers/tenants are advised to recheck the measurements



OFFICE ADDRESS

37-39 George Street
Wakefield
West Yorkshire
WF1 1LX

OFFICE DETAILS

01924 200544
wakefield@hodsonsproperty.co.uk
www.hodsonsproperty.co.uk