



HODSONS

ASKING PRICE

**£190,000**

**Checkstone Avenue**

Castleford, WF10 5EN

Located in the bustling town of Castleford, this modern three-bedroom, semi-detached home is ideal for families and commuters alike. Situated close to major motorway links, including the M62, this property offers easy access to Leeds, Wakefield, and surrounding areas.

The property spans three floors, on the ground floor, you are welcomed by a bright, spacious living room leading to the enclosed rear garden. The kitchen comprises of fitted units and an integrated oven with gas hob. A convenient downstairs WC completes this floor. On the first floor, you'll find two generously sized bedrooms, both offering plenty of natural light, along with a modern family bathroom. The top floor is home to a spacious master suite, with an en-suite bathroom and built-in storage. Externally, the property features a good sized, enclosed garden. Close proximity to local amenities, excellent schools, and major road networks.

3



2



1

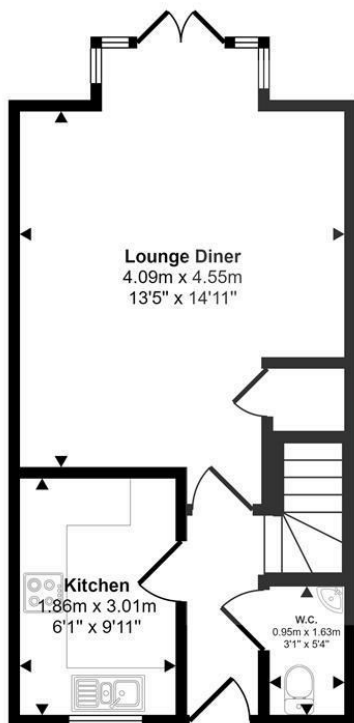








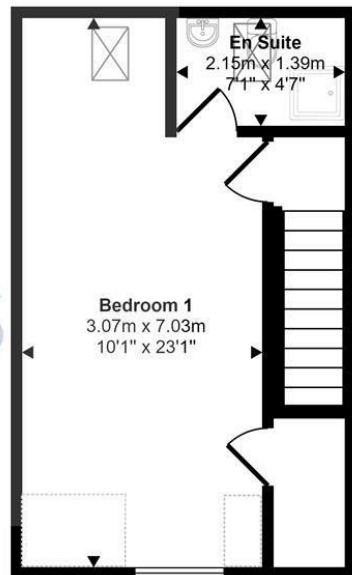
Approx Gross Internal Area  
94 sq m / 1017 sq ft



Ground Floor  
Approx 33 sq m / 354 sq ft



First Floor  
Approx 33 sq m / 350 sq ft



Second Floor  
Approx 29 sq m / 313 sq ft

Denotes head height below 1.5m

This floorplan is only for illustrative purposes and is not to scale. Measurements of rooms, doors, windows, and any items are approximate and no responsibility is taken for any error, omission or mis-statement. Icons of items such as bathroom suites are representations only and may not look like the real items. Made with Made Snappy 360.

**LOCAL AUTHORITY**

Wakefield

**TENURE**

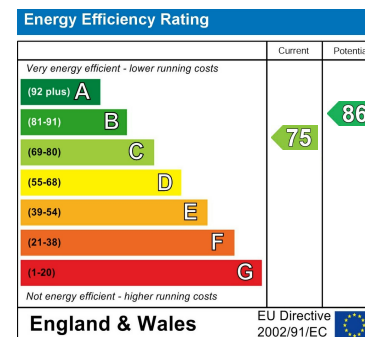
Freehold

**COUNCIL TAX BAND**

C

**VIEWINGS**

By prior appointment only



Agents Note: Whilst every care has been taken to prepare these particulars, they are for guidance purposes only. All measurements are approximate and are for general guidance purposes only and whilst every care has been taken to ensure their accuracy, they should not be relied upon and potential buyers/tenants are advised to recheck the measurements



**OFFICE ADDRESS**

37-39 George Street  
Wakefield  
West Yorkshire  
WF1 1LX

**OFFICE DETAILS**

01924 200544  
wakefield@hodsonsproperty.co.uk  
www.hodsonsproperty.co.uk