



HODSONS

£135,000

Hugh Street

Castleford, WF10 4DU



PROPERTY SUMMARY

To be sold with no onward chain is this superb, two bedroom mid terrace property located on Hugh Street in Castleford. The property would be ideal for first time buyers or investors alike. The property has recently been refurbished and ready to move in. The property comprises of a spacious lounge and a kitchen diner. On the First floor there are two good sized bedrooms and a three piece white suite bathroom. Externally there is a low maintenance garden to the rear. To the front, there is on street parking. Hugh Street is within close proximity of Castleford Town Centre and it's wide range of amenities.

2



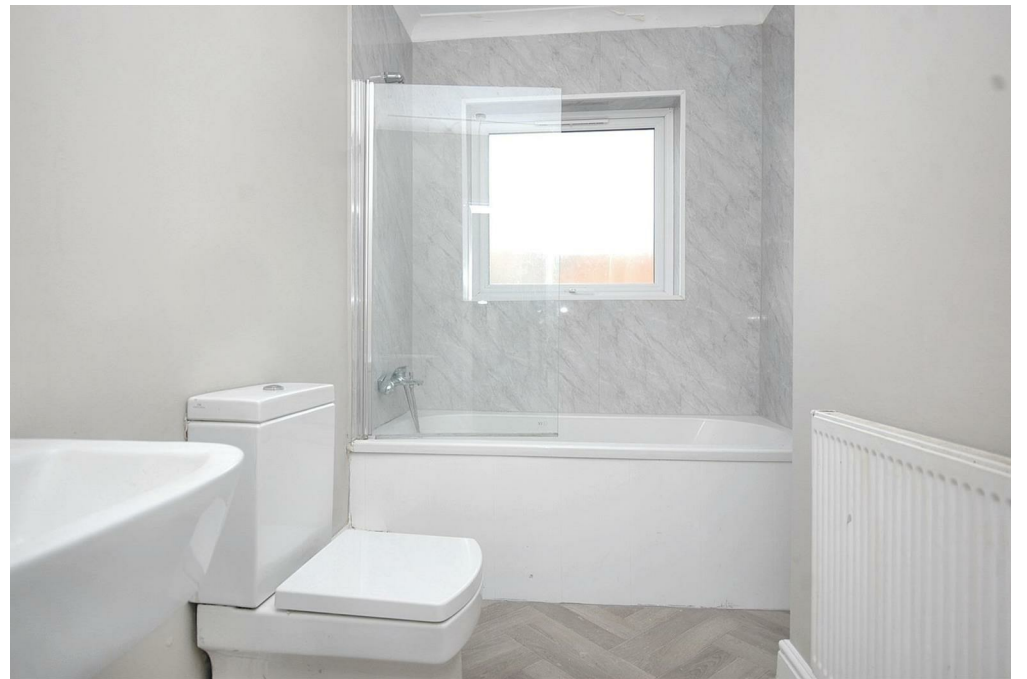
1



2

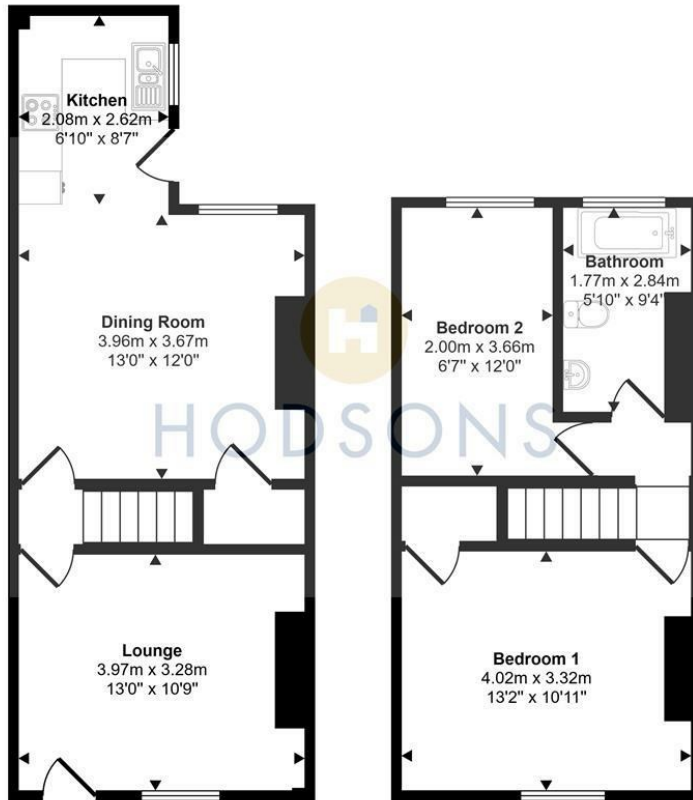








Approx Gross Internal Area
70 sq m / 749 sq ft



Ground Floor
Approx 38 sq m / 404 sq ft

First Floor
Approx 32 sq m / 345 sq ft

This floorplan is only for illustrative purposes and is not to scale. Measurements of rooms, doors, windows, and any items are approximate and no responsibility is taken for any error, omission or mis-statement. Icons of items such as bathroom suites are representations only and may not look like the real items. Made with Made Snappy 360.

LOCAL AUTHORITY

Wakefield

TENURE

Freehold

COUNCIL TAX BAND

A

VIEWINGS

By prior appointment only

Energy Efficiency Rating		Current	Potential
<i>Very energy efficient - lower running costs</i>			
(92 plus)	A		
(81-91)	B		
(69-80)	C		
(55-68)	D	65	
(39-54)	E		
(21-38)	F		
(1-20)	G		
<i>Not energy efficient - higher running costs</i>			
England & Wales		EU Directive 2002/91/EC	

Agents Note: Whilst every care has been taken to prepare these particulars, they are for guidance purposes only. All measurements are approximate and are for general guidance purposes only and whilst every care has been taken to ensure their accuracy, they should not be relied upon and potential buyers/tenants are advised to recheck the measurements



OFFICE ADDRESS

37-39 George Street
Wakefield
West Yorkshire
WF1 1LX

OFFICE DETAILS

01924 200544
wakefield@hodsonsproperty.co.uk
www.hodsonsproperty.co.uk