



HODSONS



PCM

£695 PCM

Albion Mews

Wakefield, WF4 4GY

PROPERTY SUMMARY

Set within a modern and attractive development this superb well presented first floor apartment The accommodation comprises: inner hallway, open plan living/dining kitchen with white goods, two bedrooms with fitted wardrobes to the main bedroom and a single fitted wardrobe to the second bedroom. Bathroom with shower over bath. Allocated parking for one vehicle.

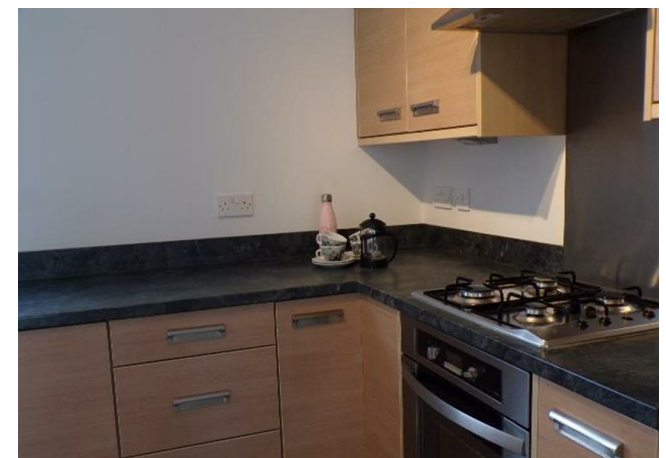
2



1



0





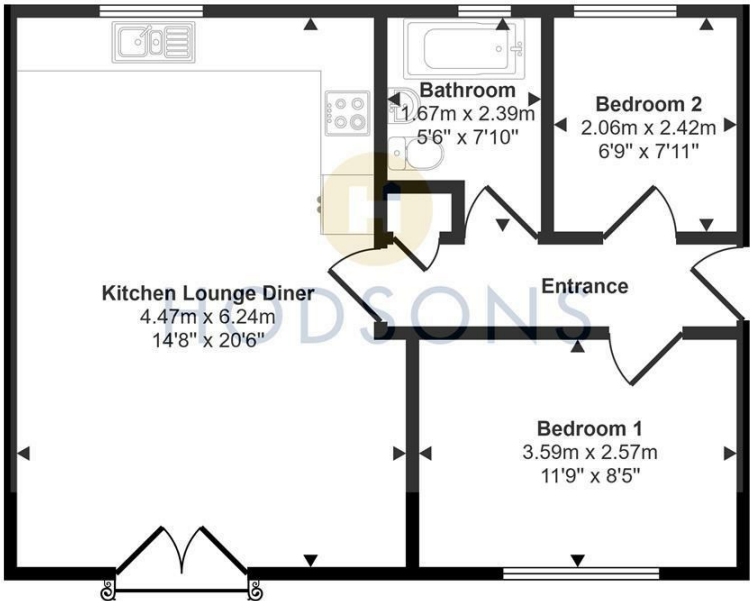
LOCAL AUTHORITY
Wakefield Metropolitan District council

TENURE

COUNCIL TAX BAND
B

VIEWINGS
By prior appointment only

Approx Gross Internal Area
51 sq m / 545 sq ft



Floorplan

This floorplan is only for illustrative purposes and is not to scale. Measurements of rooms, doors, windows, and any items are approximate and no responsibility is taken for any error, omission or mis-statement. Icons of items such as bathroom suites are representations only and may not look like the real items. Made with Made Snappy 360.

Energy Efficiency Rating		Current	Potential
<i>Very energy efficient - lower running costs</i>			
(92 plus) A			
(81-91) B		80	81
(69-80) C			
(55-68) D			
(39-54) E			
(21-38) F			
(1-20) G			
<i>Not energy efficient - higher running costs</i>			
England & Wales		EU Directive 2002/91/EC	

Agents Note: Whilst every care has been taken to prepare these particulars, they are for guidance purposes only. All measurements are approximate and are for general guidance purposes only and whilst every care has been taken to ensure their accuracy, they should not be relied upon and potential buyers/tenants are advised to recheck the measurements



<p>OFFICE ADDRESS 37-39 George Street Wakefield West Yorkshire WF1 1LX</p>	<p>OFFICE DETAILS 01924 200544 wakefield@hodsonsproperty.co.uk www.hodsonsproperty.co.uk</p>
---	---