



HODSONS



PER MONTH

£725 Per Month

Mayfair Court

Wakefield, WF2 8WL



HODSONS

PROPERTY SUMMARY

This well-presented two-bedroom apartment in Wakefield offers a fantastic location directly opposite the scenic Thornes Park. The property comprises a welcoming hallway, two good-sized bedrooms, a modern bathroom, and a fully fitted kitchen complete with appliances.

Enjoy stunning views of the park while benefiting from close proximity to local amenities, excellent transport links, and easy access to the motorway network

2



1

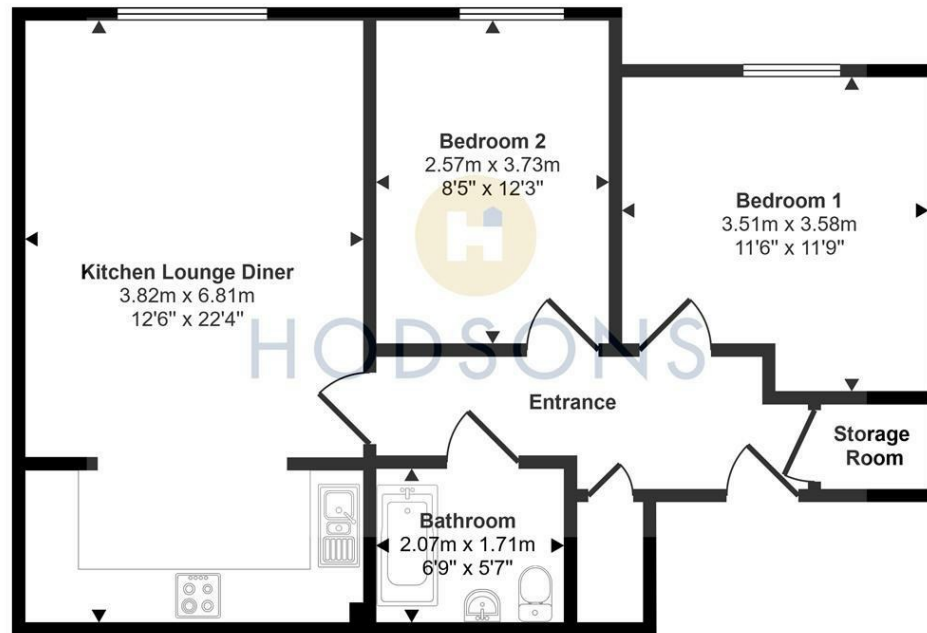


1





Approx Gross Internal Area
63 sq m / 674 sq ft



Floorplan

This floorplan is only for illustrative purposes and is not to scale. Measurements of rooms, doors, windows, and any items are approximate and no responsibility is taken for any error, omission or mis-statement. Icons of items such as bathroom suites are representations only and may not look like the real items. Made with Made Snappy 360.

LOCAL AUTHORITY

Wakefield Council

TENURE

COUNCIL TAX BAND

B

VIEWINGS

By prior appointment only

Energy Efficiency Rating		
	Current	Potential
Very energy efficient - lower running costs		
(92 plus) A		
(81-91) B		
(69-80) C		
(55-68) D		
(39-54) E		
(21-38) F		
(1-20) G		
Not energy efficient - higher running costs		
England & Wales	EU Directive 2002/91/EC	

77

83

Agents Note: Whilst every care has been taken to prepare these particulars, they are for guidance purposes only. All measurements are approximate and are for general guidance purposes only and whilst every care has been taken to ensure their accuracy, they should not be relied upon and potential buyers/tenants are advised to recheck the measurements



OFFICE ADDRESS

37-39 George Street
Wakefield
West Yorkshire
WF1 1LX

OFFICE DETAILS

01924 200544
wakefield@hodsonsproperty.co.uk
www.hodsonsproperty.co.uk