



# HODSONS

PCM

**£850 PCM**

**Mayfair Court**

Wakefield, WF2 8WL





## PROPERTY SUMMARY

We are pleased to offer to the rental market, this executive, immaculate second floor TWO DOUBLE BEDROOM apartment, overlooking Thornes Park and within easy reach of Wakefield City Centre, Westgate Railway Station and the M1 motorway network! The property includes an impressive fitted kitchen with marble worktops. It comprises of entrance hall, handy storage cupboard with fitted shelving, utility cupboard with washer dryer, lounge/kitchen area with dividing breakfast bar with stools and oven, hob, extractor, fridge and freezer, plus sliding french doors, two double bedrooms with master having doors leading to a small walk on balcony area with astro turf and a house bathroom/WC with shower fitment. Electric heating and low energy lighting throughout. PVCu double glazing.

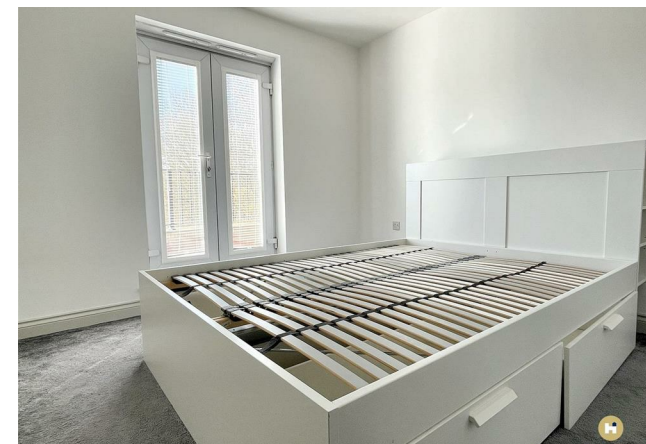
2



1



1





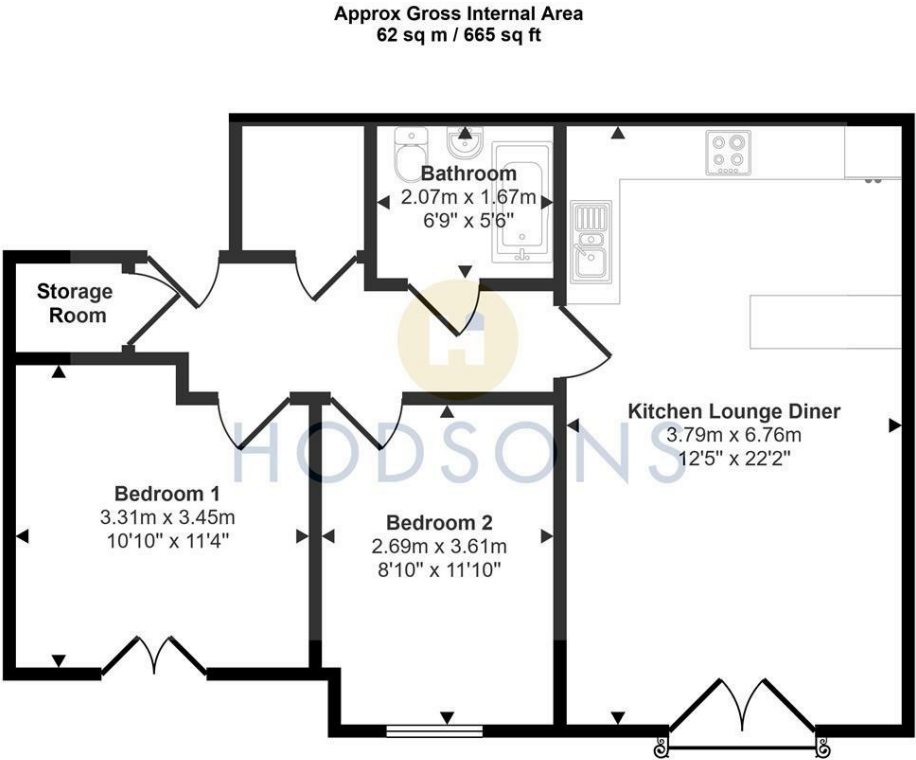


**LOCAL AUTHORITY**  
Wakefield Metropolitan District council

**TENURE**

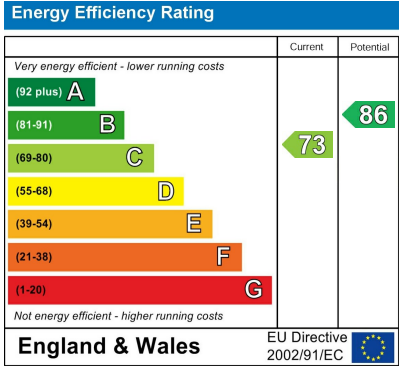
**COUNCIL TAX BAND**  
B

**VIEWINGS**  
By prior appointment only



Floorplan

This floorplan is only for illustrative purposes and is not to scale. Measurements of rooms, doors, windows, and any items are approximate and no responsibility is taken for any error, omission or mis-statement. Icons of items such as bathroom suites are representations only and may not look like the real items. Made with Made Snappy 360.



Agents Note: Whilst every care has been taken to prepare these particulars, they are for guidance purposes only. All measurements are approximate and are for general guidance purposes only and whilst every care has been taken to ensure their accuracy, they should not be relied upon and potential buyers/tenants are advised to recheck the measurements



**OFFICE ADDRESS**  
37-39 George Street  
Wakefield  
West Yorkshire  
WF1 1LX

**OFFICE DETAILS**  
01924 200544  
wakefield@hodsonsproperty.co.uk  
www.hodsonsproperty.co.uk