



HODSONS

ASKING PRICE

**£435,000**

**Cotham Drive**

Wakefield, WF2 7FA



HODSONS



## PROPERTY SUMMARY

Located within a modern development by Avant Homes this attractive contemporary style four-bedroom detached home offers spacious and versatile accommodation throughout. Ideal for families and those seeking more space, the property is well placed for access to a wide range of local amenities, highly regarded schools, and excellent transport links, including the M1 motorway.

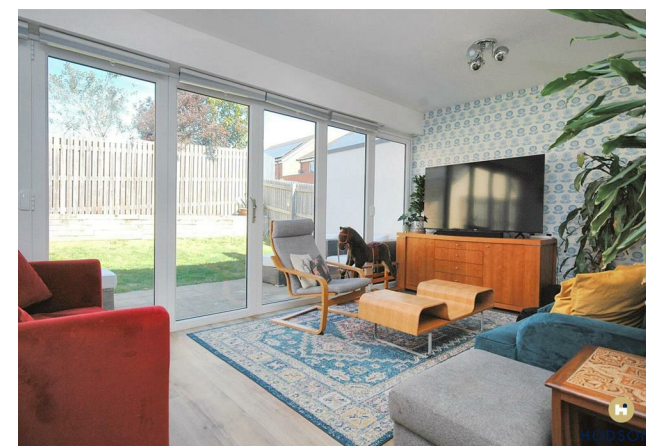
4



2



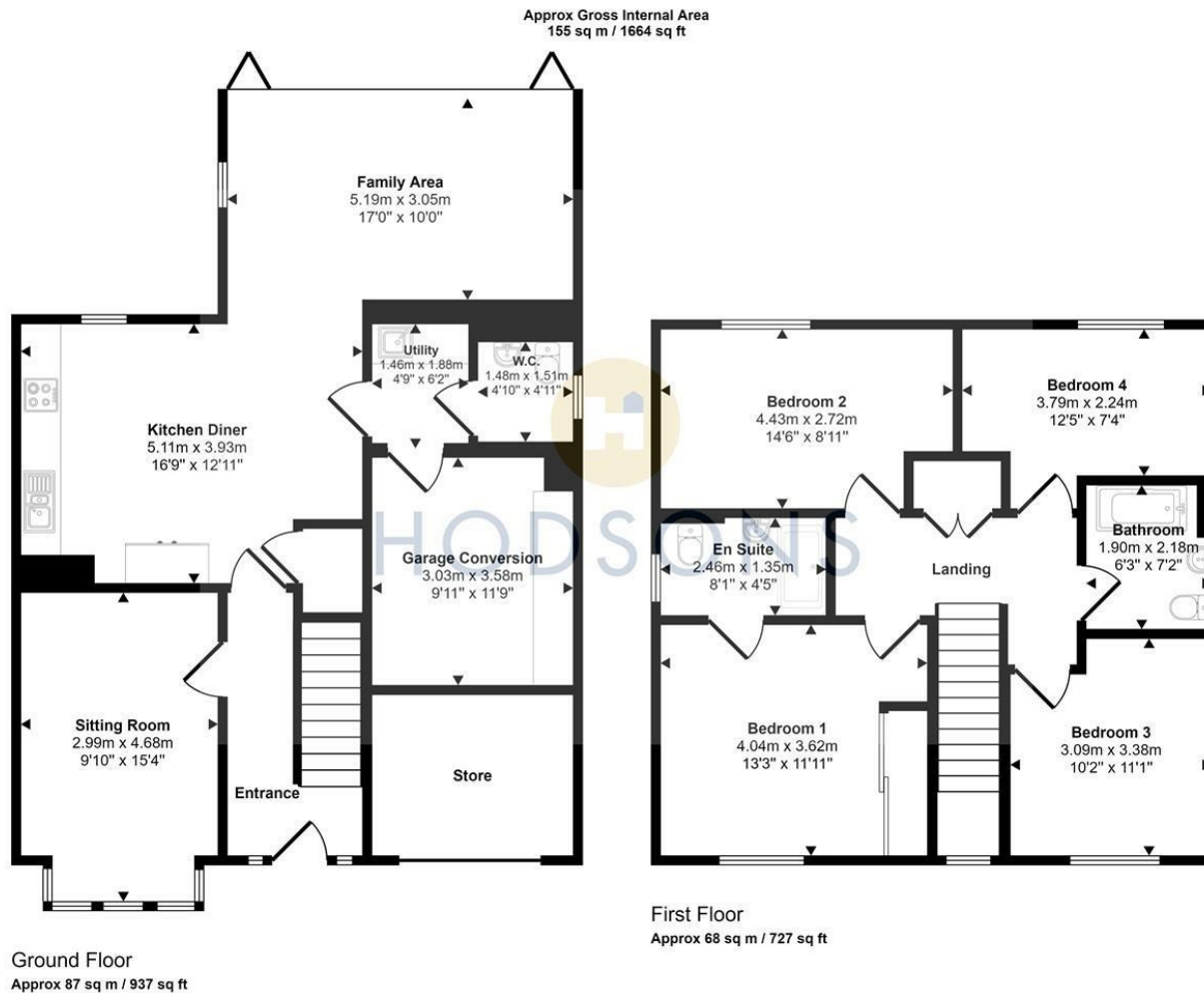
2











This floorplan is only for illustrative purposes and is not to scale. Measurements of rooms, doors, windows, and any items are approximate and no responsibility is taken for any error, omission or mis-statement. Icons of items such as bathroom suites are representations only and may not look like the real items. Made with Made Snappy 360.

## LOCAL AUTHORITY

Wakefield

## TENURE

Freehold

## COUNCIL TAX BAND

D

## VIEWINGS

By prior appointment only

Energy Efficiency Rating		
	Current	Potential
Very energy efficient - lower running costs		
(92 plus) <b>A</b>		92
(81-91) <b>B</b>	83	
(69-80) <b>C</b>		
(55-68) <b>D</b>		
(39-54) <b>E</b>		
(21-38) <b>F</b>		
(1-20) <b>G</b>		
Not energy efficient - higher running costs		
<b>England &amp; Wales</b>	EU Directive 2002/91/EC	

Agents Note: Whilst every care has been taken to prepare these particulars, they are for guidance purposes only. All measurements are approximate and are for general guidance purposes only and whilst every care has been taken to ensure their accuracy, they should not be relied upon and potential buyers/tenants are advised to recheck the measurements



## OFFICE ADDRESS

37-39 George Street  
Wakefield  
West Yorkshire  
WF1 1LX

## OFFICE DETAILS

01924 200544  
wakefield@hodsonsproperty.co.uk  
www.hodsonsproperty.co.uk