



HODSONS

ASKING PRICE

**£185,000**

**Croft Avenue**

Altofts, WF6 2JW



HODSONS



## PROPERTY SUMMARY

A three bedroom mid-terraced property with off-road parking and enclosed rear garden. Ideal for first-time buyers or a young family, located in the popular Altofts area with excellent commuter links.

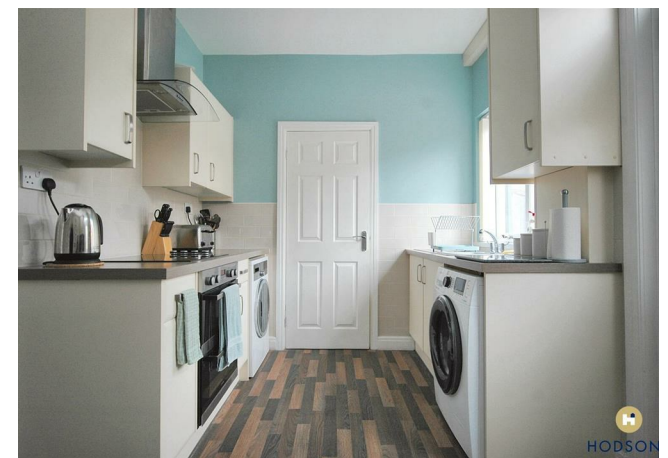
3



2



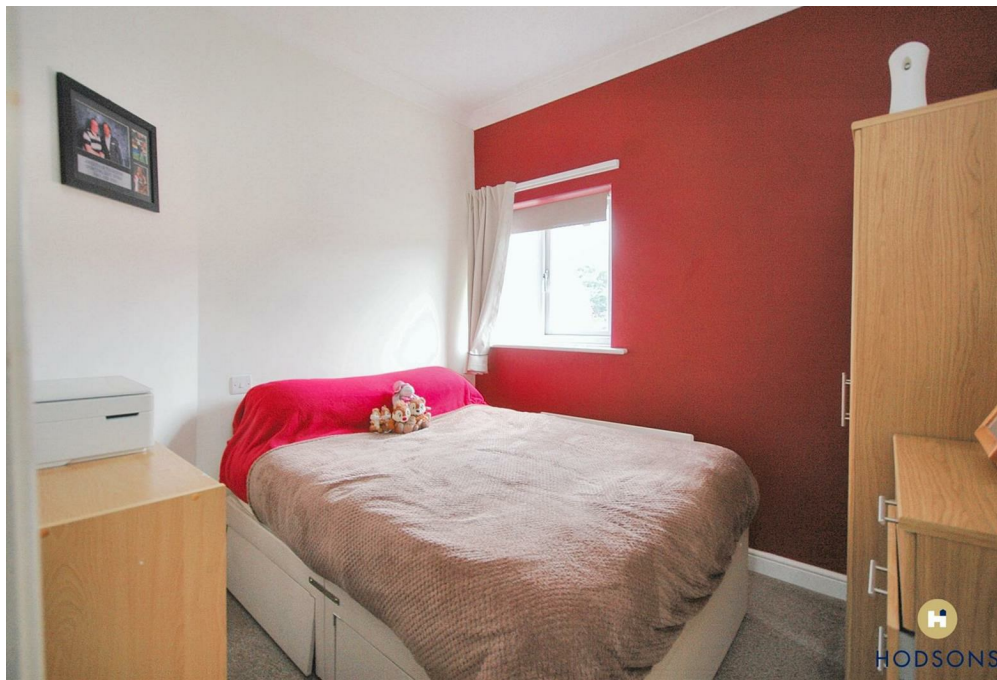
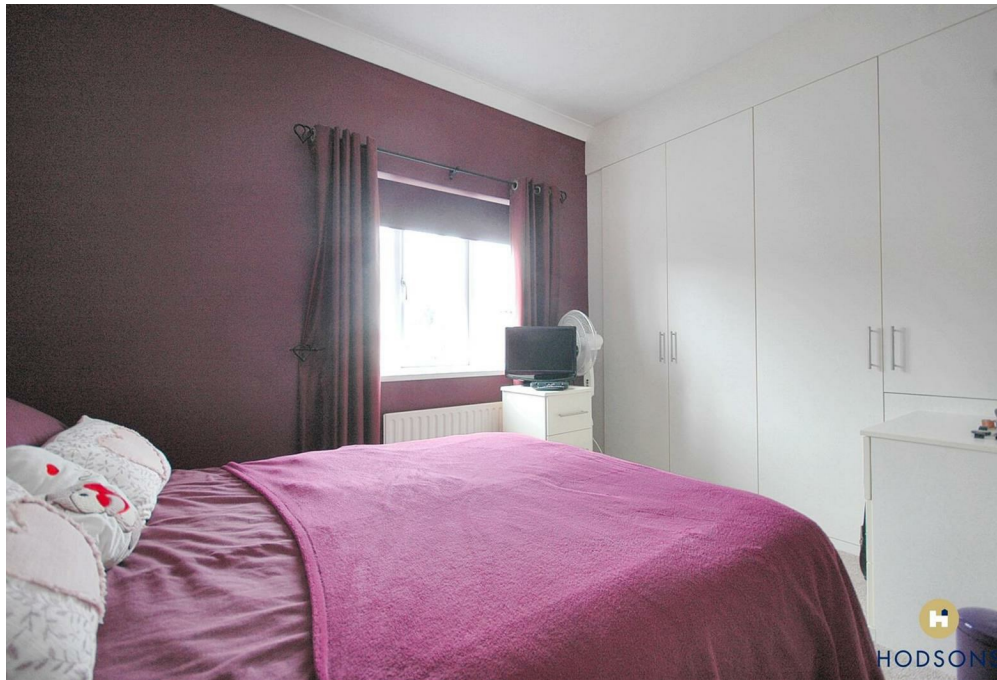
1











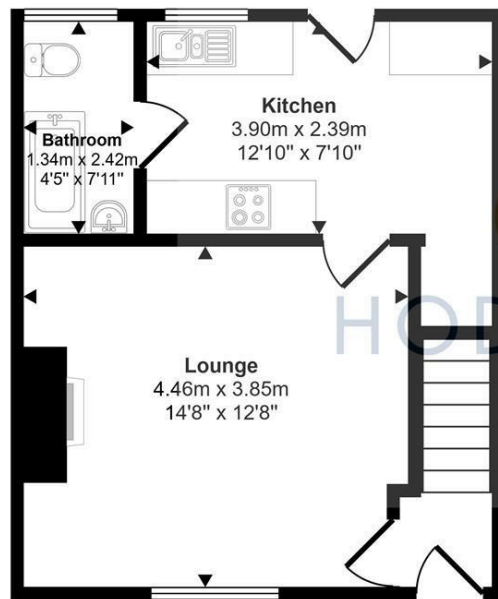




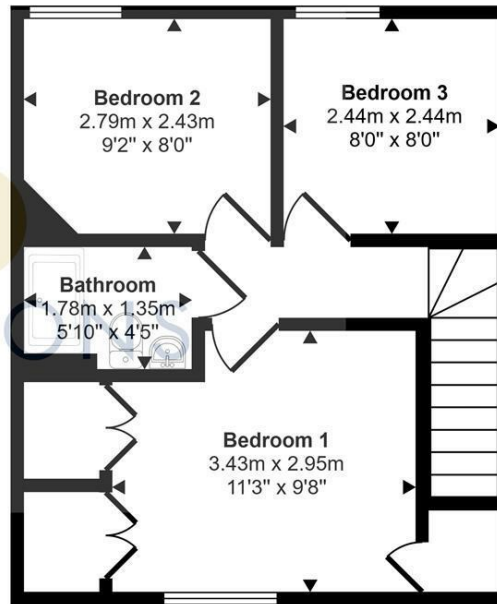
HODSONS



Approx Gross Internal Area  
69 sq m / 743 sq ft



Ground Floor  
Approx 34 sq m / 368 sq ft



First Floor  
Approx 35 sq m / 375 sq ft

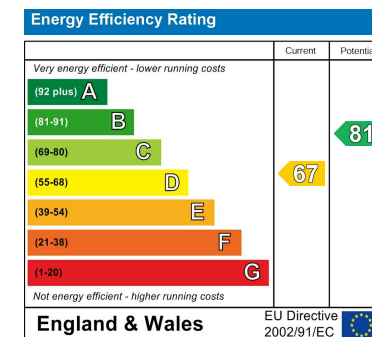
This floorplan is only for illustrative purposes and is not to scale. Measurements of rooms, doors, windows, and any items are approximate and no responsibility is taken for any error, omission or mis-statement. Icons of items such as bathroom suites are representations only and may not look like the real items. Made with Made Snappy 360.

**LOCAL AUTHORITY**  
Wakefield

**TENURE**  
Freehold

**COUNCIL TAX BAND**  
A

**VIEWINGS**  
By prior appointment only



Agents Note: Whilst every care has been taken to prepare these particulars, they are for guidance purposes only. All measurements are approximate and are for general guidance purposes only and whilst every care has been taken to ensure their accuracy, they should not be relied upon and potential buyers/tenants are advised to recheck the measurements



**OFFICE ADDRESS**  
37-39 George Street  
Wakefield  
West Yorkshire  
WF1 1LX

**OFFICE DETAILS**  
01924 200544  
wakefield@hodsonsproperty.co.uk  
www.hodsonsproperty.co.uk