



HODSONS

PCM

**£1,050 PCM**

**Goldcrest Road**

Castleford, WF10 2GF



## PROPERTY SUMMARY

A beautifully presented and modern three-bedroom end town house located in the sought-after village of Allerton Bywater. This stylish home offers spacious and well-maintained accommodation throughout, including a bright and welcoming lounge, a modern dining kitchen with ample space for family dining, three well-proportioned bedrooms, and a contemporary house bathroom.

Externally, the property features an enclosed rear garden, ideal for relaxing or entertaining. Ideally situated for commuters, the home provides excellent access to motorway links and public transport routes, offering convenient travel to Leeds, Castleford and surrounding areas.

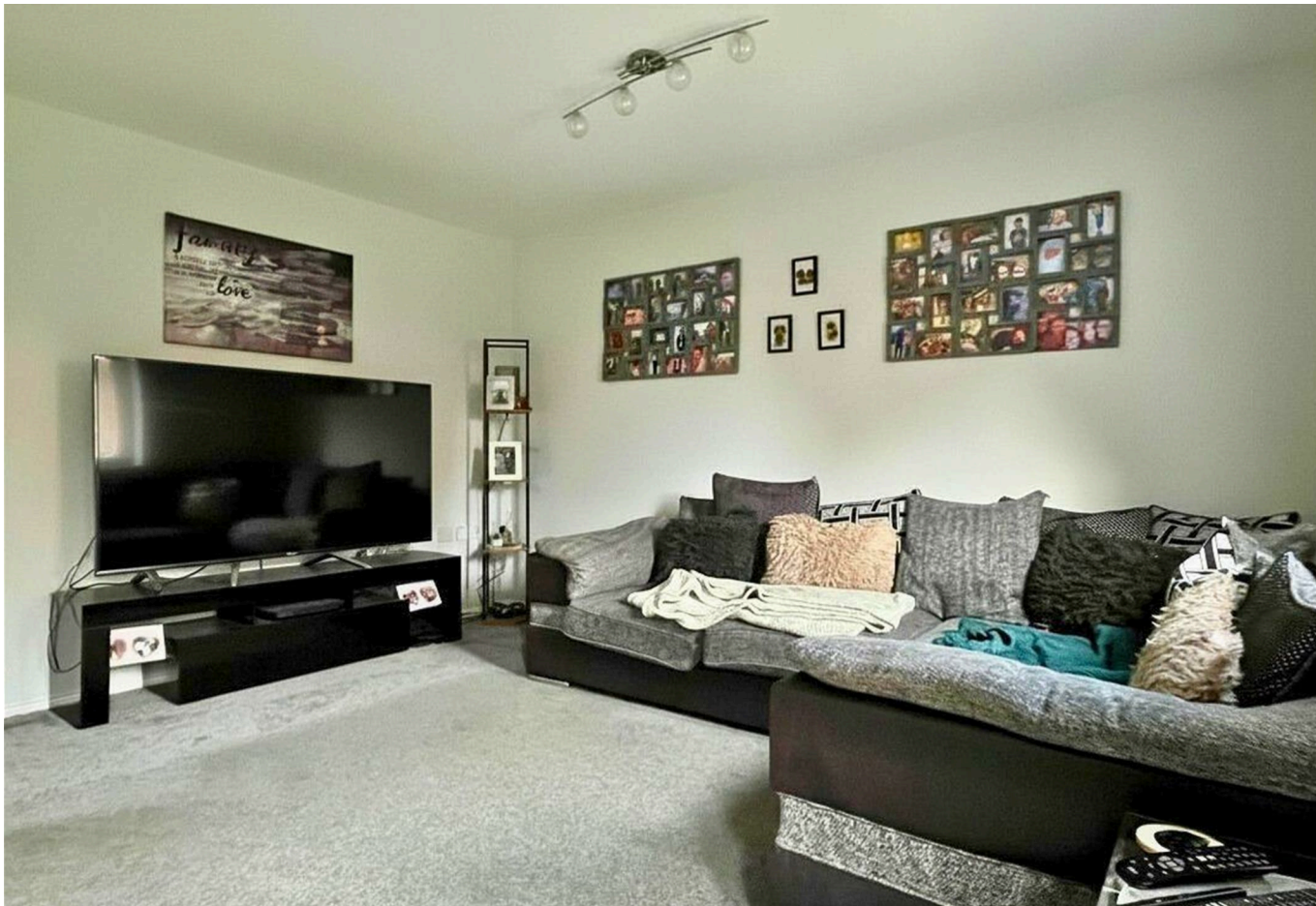
3

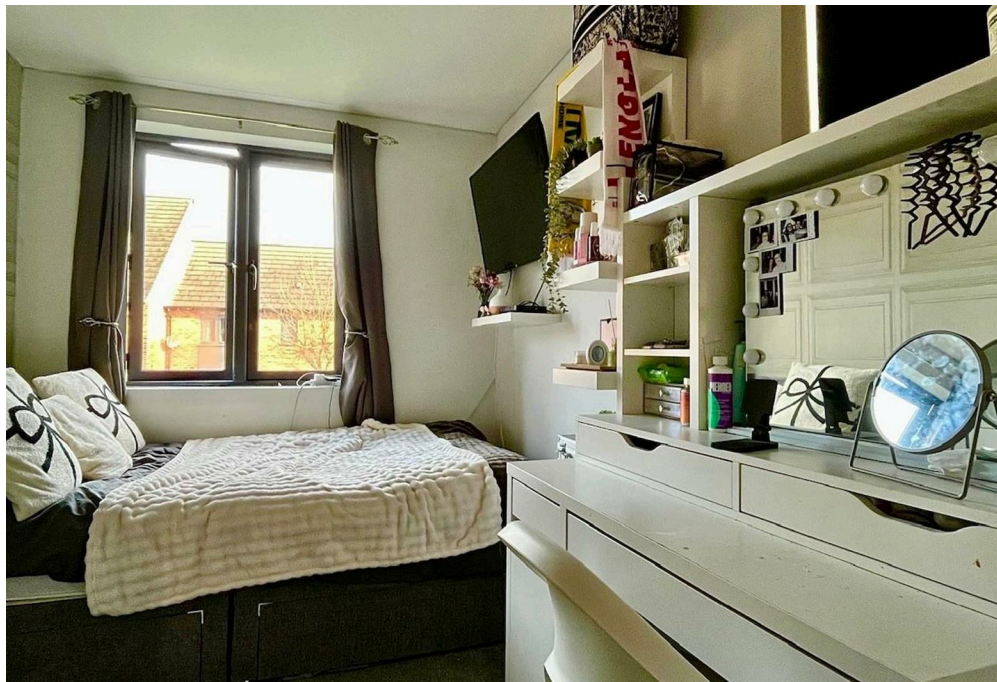


1



1



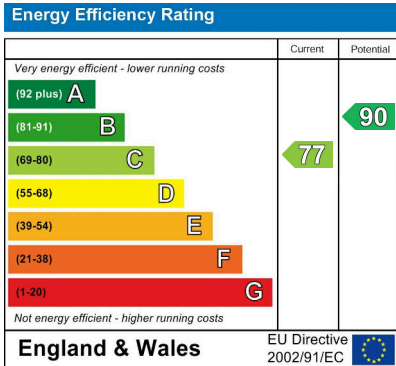


**LOCAL AUTHORITY**  
Wakefield Metropolitan District council

**TENURE**

**COUNCIL TAX BAND**  
B

**VIEWINGS**  
By prior appointment only



Agents Note: Whilst every care has been taken to prepare these particulars, they are for guidance purposes only. All measurements are approximate and are for general guidance purposes only and whilst every care has been taken to ensure their accuracy, they should not be relied upon and potential buyers/tenants are advised to recheck the measurements



**OFFICE ADDRESS**  
37-39 George Street  
Wakefield  
West Yorkshire  
WF1 1LX

**OFFICE DETAILS**  
01924 200544  
wakefield@hodsonsproperty.co.uk  
www.hodsonsproperty.co.uk