



HODSONS



£150,000

Marshall Street

Wakefield, WF3 4HT



HODSONS

PROPERTY SUMMARY

A charming two-bedroom end terrace home in the heart of Stanley, offering bright living spaces and excellent convenience. The property features a light-filled lounge, a modern fitted kitchen with access to a generous enclosed rear yard, and two well-proportioned bedrooms upstairs. The bathroom includes a bath with overhead shower. Located in a popular residential area close to local shops, schools, and transport links, this home is perfect for first-time buyers or investors. Wakefield city centre is only a short drive away, with easy access to the M1 and M62 for commuters.

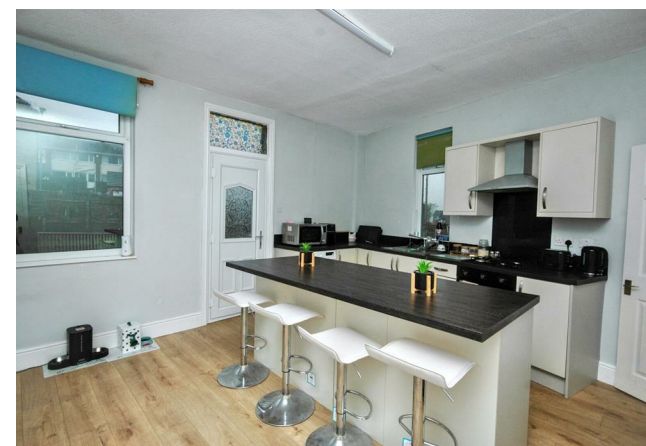
2



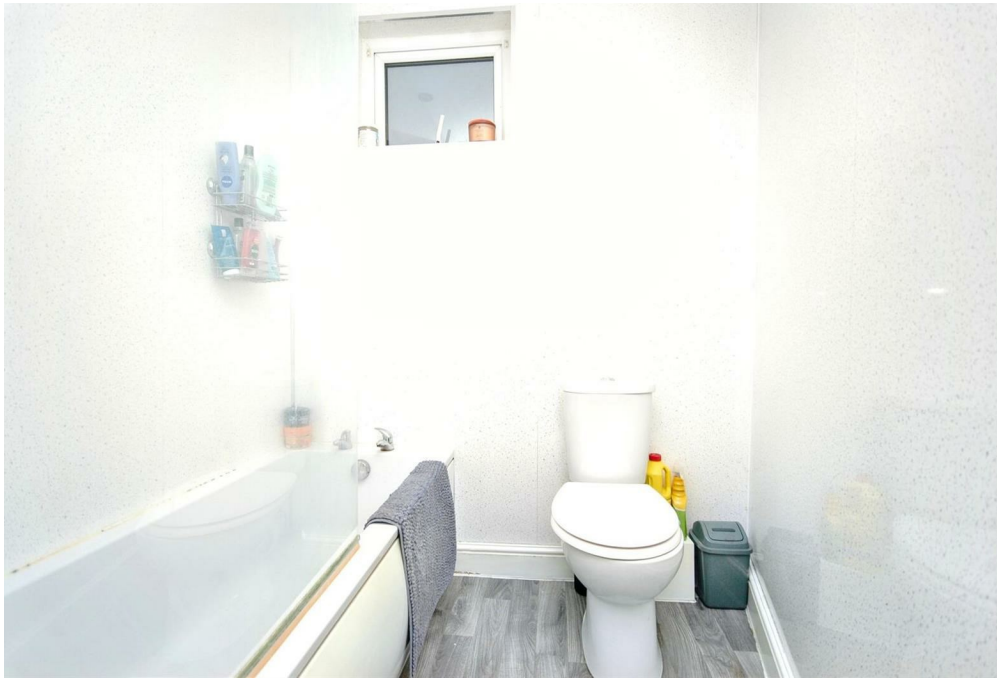
1



1







LOCAL AUTHORITY

Wakefield

TENURE

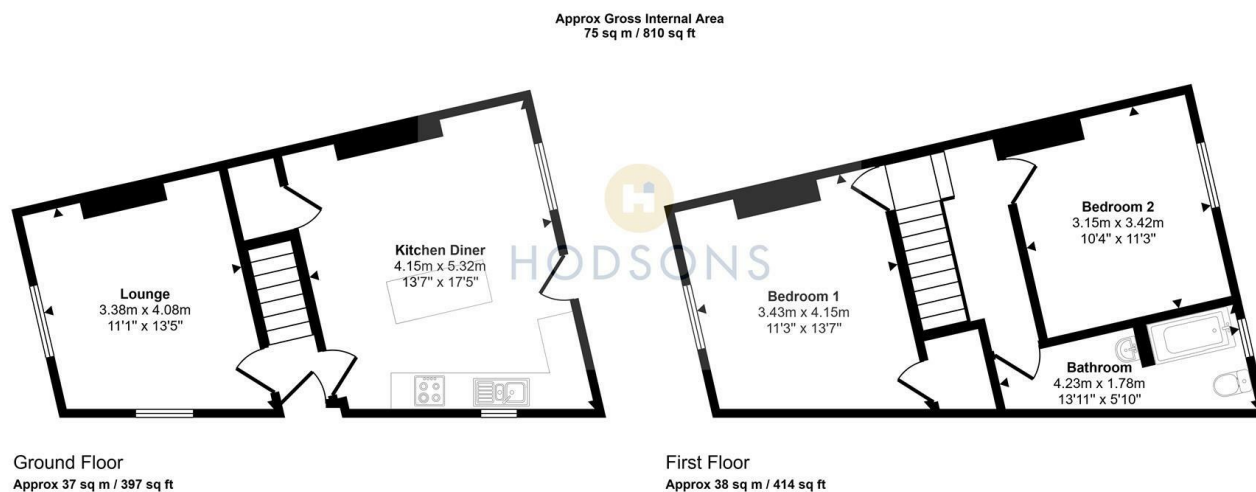
Freehold

COUNCIL TAX BAND

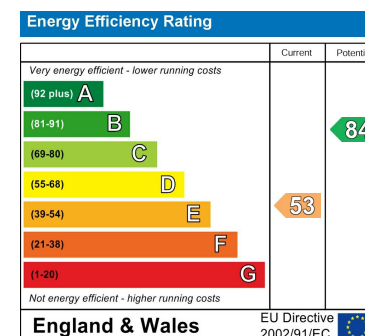
A

VIEWINGS

By prior appointment only



This floorplan is only for illustrative purposes and is not to scale. Measurements of rooms, doors, windows, and any items are approximate and no responsibility is taken for any error, omission or mis-statement. Icons of items such as bathroom suites are representations only and may not look like the real items. Made with Made Snappy 360.



Agents Note: Whilst every care has been taken to prepare these particulars, they are for guidance purposes only. All measurements are approximate and are for general guidance purposes only and whilst every care has been taken to ensure their accuracy, they should not be relied upon and potential buyers/tenants are advised to recheck the measurements

**OFFICE ADDRESS**

37-39 George Street
Wakefield
West Yorkshire
WF1 1LX

OFFICE DETAILS

01924 200544
wakefield@hodsonsproperty.co.uk
www.hodsonsproperty.co.uk