



HODSONS



ASKING PRICE

£380,000

Park Hill Way

Wakefield, WF1 5FS

PROPERTY SUMMARY

A stylish and well-maintained four-bedroom detached home positioned on Park Hill Way in Wakefield. Offering modern interiors, generous living space and a family-friendly layout, this property delivers an appealing blend of comfort, practicality and contemporary design. With open-plan living areas, upgraded finishes and attractive outdoor space, it's an excellent choice for buyers seeking a move-in-ready home in a convenient and desirable location.

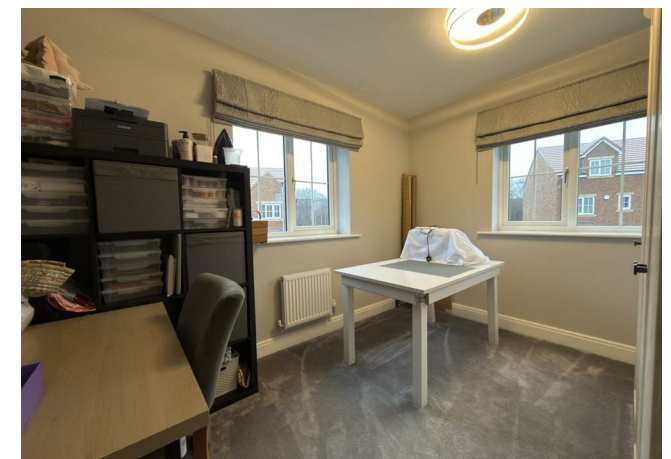
4



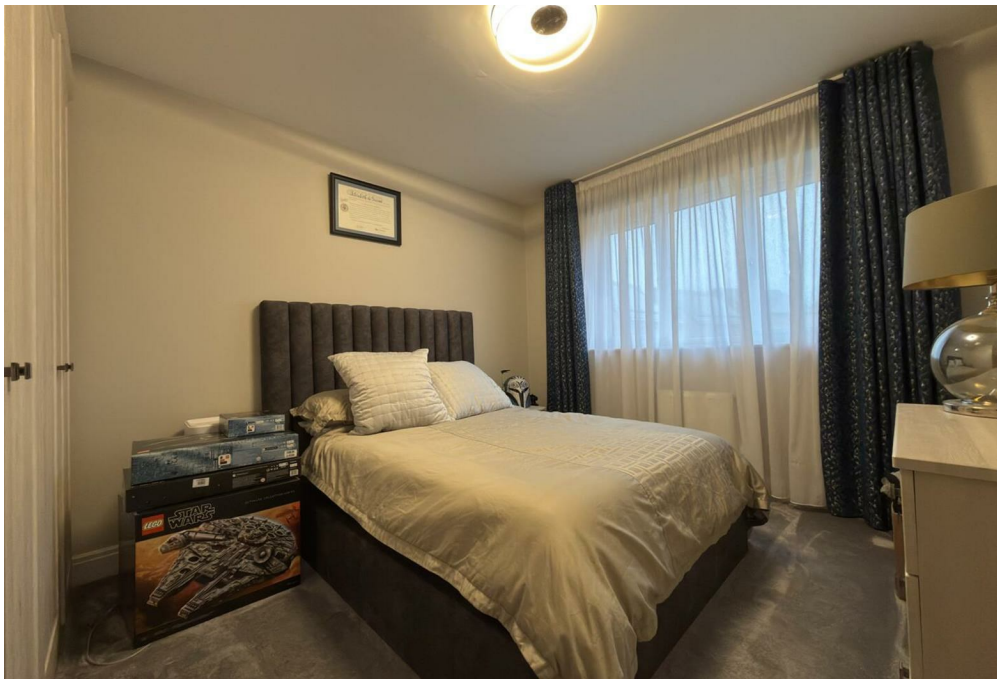
2



1











LOCAL AUTHORITY

Wakefield

TENURE

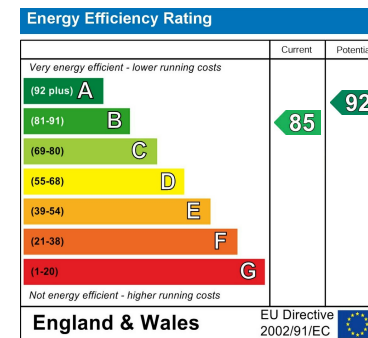
Freehold

COUNCIL TAX BAND

E

VIEWINGS

By prior appointment only



Agents Note: Whilst every care has been taken to prepare these particulars, they are for guidance purposes only. All measurements are approximate and are for general guidance purposes only and whilst every care has been taken to ensure their accuracy, they should not be relied upon and potential buyers/tenants are advised to recheck the measurements



OFFICE ADDRESS

37-39 George Street
Wakefield
West Yorkshire
WF1 1LX

OFFICE DETAILS

01924 200544
wakefield@hodsonsproperty.co.uk
www.hodsonsproperty.co.uk