



HODSONS

ASKING PRICE

£180,000

Rufford Street

Wakefield, WF2 9PB

PROPERTY SUMMARY

A well-presented mid-terrace home offered with no onward chain, featuring an entrance lobby, lounge, fitted kitchen, ground floor W.C., separate store room, three bedrooms and a modern bathroom with white suite and shower. Benefits include gas central heating, UPVC double glazing and an enclosed rear garden. An ideal first-time buyer opportunity where early viewing is recommended.

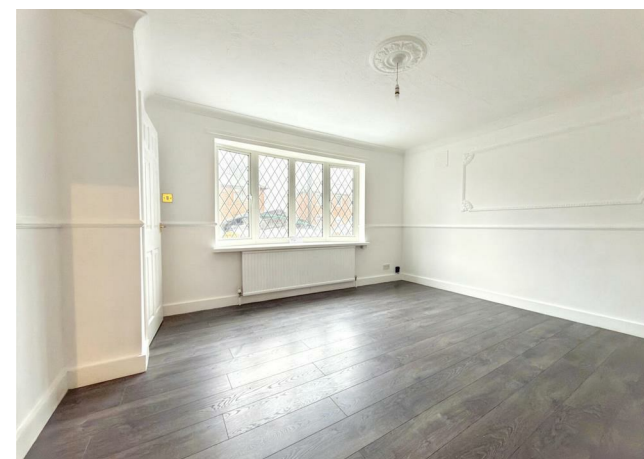
3



1



1









Approx Gross Internal Area
80 sq m / 866 sq ft



Ground Floor
Approx 38 sq m / 407 sq ft

First Floor
Approx 43 sq m / 459 sq ft

Denotes head height below 1.5m

This floorplan is only for illustrative purposes and is not to scale. Measurements of rooms, doors, windows, and any items are approximate and no responsibility is taken for any error, omission or mis-statement. Icons of items such as bathroom suites are representations only and may not look like the real items. Made with Made Snappy 360.

LOCAL AUTHORITY

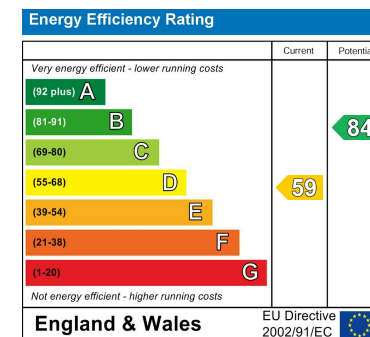
TENURE

Freehold

COUNCIL TAX BAND

VIEWINGS

By prior appointment only



Agents Note: Whilst every care has been taken to prepare these particulars, they are for guidance purposes only. All measurements are approximate and are for general guidance purposes only and whilst every care has been taken to ensure their accuracy, they should not be relied upon and potential buyers/tenants are advised to recheck the measurements



OFFICE ADDRESS

37-39 George Street
Wakefield
West Yorkshire
WF1 1LX

OFFICE DETAILS

01924 200544
wakefield@hodsonsproperty.co.uk
www.hodsonsproperty.co.uk