



HODSONS

PCM

£795 PCM

Garden Street

Castleford, WF10 5AP



PROPERTY SUMMARY

Recently improved to a good standard is this 3 bedroom (2 double and 1 single) inner terraced house situated in the popular residential location of Castleford being very close to a major Retail Park and within easy access of the M62 motorway. The unfurnished accommodation benefits from gas central heating and PVCu double glazing together with new carpets and re-decoration throughout. Further accommodation comprises of good sized living room, small inner dining room with inbuilt cupboards, kitchenette with gas cooker and a ground floor bathroom/WC with shower fitting. Small front and rear yards with off street parking space to the rear for one car. On-street parking to front.

3



1

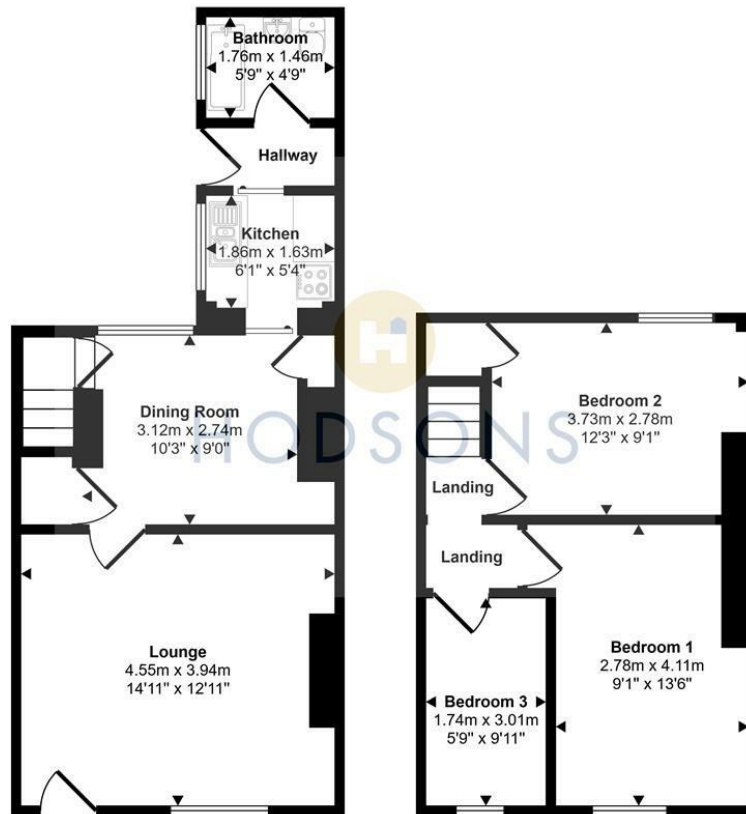


1





Approx Gross Internal Area
72 sq m / 773 sq ft



Ground Floor
Approx 39 sq m / 419 sq ft

First Floor
Approx 33 sq m / 354 sq ft

This floorplan is only for illustrative purposes and is not to scale. Measurements of rooms, doors, windows, and any items are approximate and no responsibility is taken for any error, omission or mis-statement. Icons of items such as bathroom suites are representations only and may not look like the real items. Made with Made Snappy 360.

LOCAL AUTHORITY
Wakefield Metropolitan District council

TENURE

COUNCIL TAX BAND
A

VIEWINGS
By prior appointment only

Energy Efficiency Rating		Current	Potential
<i>Very energy efficient - lower running costs</i>			
(92 plus) A			86
(81-91) B			
(69-80) C			
(55-68) D		57	
(39-54) E			
(21-38) F			
(1-20) G			
<i>Not energy efficient - higher running costs</i>			
England & Wales		EU Directive 2002/91/EC	

Agents Note: Whilst every care has been taken to prepare these particulars, they are for guidance purposes only. All measurements are approximate and are for general guidance purposes only and whilst every care has been taken to ensure their accuracy, they should not be relied upon and potential buyers/tenants are advised to recheck the measurements



OFFICE ADDRESS
37-39 George Street
Wakefield
West Yorkshire
WF1 1LX

OFFICE DETAILS
01924 200544
wakefield@hodsonsproperty.co.uk
www.hodsonsproperty.co.uk