



HODSONS

ASKING PRICE

£115,000

Pretoria Street

Wakefield, WF1 5PY



PROPERTY SUMMARY

This much improved traditional style mid terrace home represents an excellent opportunity for first time buyers. A viewing is strongly recommended which will reveal well appointed living space that briefly comprises; lounge, kitchen which has been recently refitted with contemporary units, ground floor bathroom with modern white suite. To the first floor are two bedrooms.

The house has UPVC double glazing and a gas central heating system To the rear is an enclosed yard. Conveniently located approximately 1 mile from the centre of Wakefield and therefore accessible for an extensive range of amenities including shops, restaurants and excellent transport connections. Offered to the market with no onward chain.

2



1

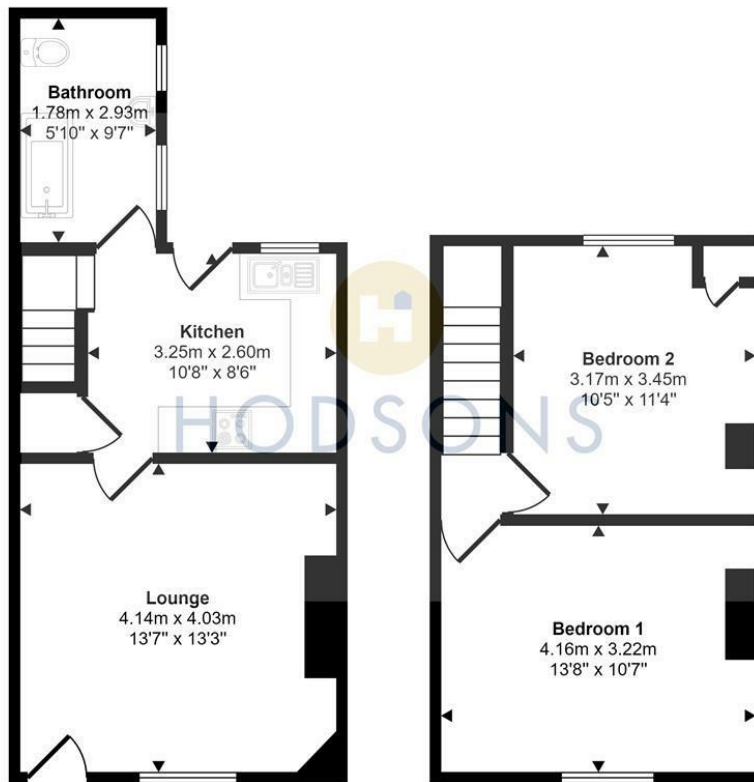


1





Approx Gross Internal Area
62 sq m / 668 sq ft



Ground Floor
Approx 34 sq m / 361 sq ft

First Floor
Approx 28 sq m / 307 sq ft

This floorplan is only for illustrative purposes and is not to scale. Measurements of rooms, doors, windows, and any items are approximate and no responsibility is taken for any error, omission or mis-statement. Icons of items such as bathroom suites are representations only and may not look like the real items. Made with Made Snappy 360.

LOCAL AUTHORITY

Wakefield

TENURE

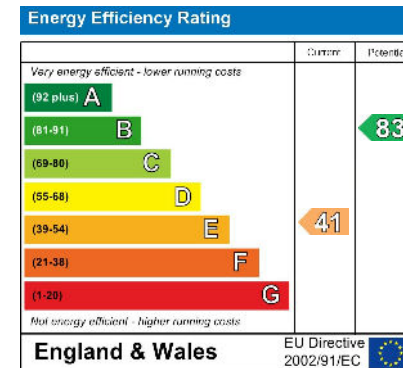
Freehold

COUNCIL TAX BAND

A

VIEWINGS

By prior appointment only



Agents Note: Whilst every care has been taken to prepare these particulars, they are for guidance purposes only. All measurements are approximate and are for general guidance purposes only and whilst every care has been taken to ensure their accuracy, they should not be relied upon and potential buyers/tenants are advised to recheck the measurements



OFFICE ADDRESS
37-39 George Street
Wakefield
West Yorkshire
WF1 1LX

OFFICE DETAILS
01924 200544
wakefield@hodsonsproperty.co.uk
www.hodsonsproperty.co.uk